

HIGH CLOSE SCHOOL



Believe in
children
Barnardo's



High Close School

Wiltshire Road

Wokingham

RG40 1TS

(+44) 1189 785767

enquiries@highclose.org.uk

Referrals from Local Authorities

please email:

referrals@highclose.org.uk

www.highclose.org.uk

ABOUT KEY STAGE 4

Dear High Close Student,

This booklet outlines what subjects are available for you to choose to follow through Years 10 and 11, what work is required to complete each course and what the examination process is. This is the first time in your education that you are able to choose some of your curriculum so it's essential that you take it seriously.

Remember, once you have made your choices, that is a commitment from you to give your best to the subjects you have chosen. Although it is possible to change courses during the first half-term of Year 10, this will place you under the stress of catching up on missed work. It is always better to stay on the courses you have chosen.

This is one of your first steps towards adulthood and I look forward to seeing you all succeed over the next two years.



Wendy Gosling - Principal

1. READ this guide in detail. **Don't just leave it lying around, hoping someone else will read it.**

2. DISCUSS your choices with **parents, carers and adults in school. They know your strengths and weaknesses and can give you good advice.**

3. CHOOSE subjects you will enjoy. **You are far more likely to be successful if you enjoy the learning.**

4. ATTEND the options evening on **31st March. Your teachers will be there to talk to you and answer any questions you have.**

COMPULSORY SUBJECTS

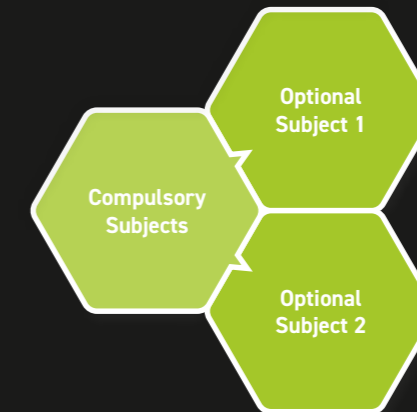
At key stage 4 a number of subjects are compulsory and these are studied by all young people. The level of learning will vary depending on the ability of each individual. Some subjects offer a number of qualifications designed to progressively stretch and challenge learners whilst others are more focused.

OPTIONAL SUBJECTS

In addition to the compulsory courses young people are able to study two optional subjects. Options are another opportunity to work towards a qualification but should also be a chance for young people to choose subjects they enjoy. Details about types of course are included in this booklet. Each option lasts for the two years of Key Stage 4.

Compulsory subjects:

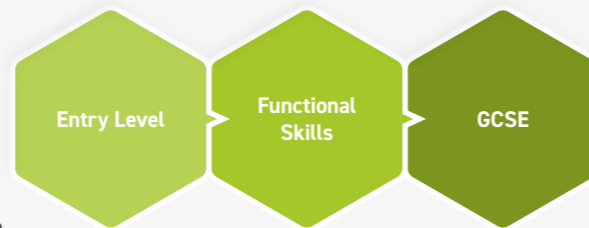
- English
- Maths
- Science
- PSHE
- Computer Science
- Humanities
- Physical Education



Optional subjects:

- Art & Design
- Arts Award
- Beauty
- Wood Work
- Food Technology
- History
- Sport Studies
- Gardening

ENGLISH @ HIGH CLOSE



The English department aims to foster a real love for the creative aspects of English as well as develop the analytical skills pupils need in order to attain to their potential. Lessons deliver the national curriculum and are differentiated to meet individual needs, ensuring that all students are able to access the curriculum. Visual learning is embedded into the curriculum to enable students to understand, remember and apply key concepts.

The speaking and listening component of all courses is delivered by a Drama specialist who works with students to develop life skills such as; increasing confidence in a variety of situations that require speaking to others, assurance in developing their own opinions and being able to share this with others in both formal and informal situations.


KS4 CURRICULUM

All students are entered for external accreditation so that on leaving High Close they have an English qualification. The department offers the WJEC English Language GCSE, OCR Functional Skills and OCR Entry Level English.

The **OCR Entry Level** Certificate in English builds confidence in reading, writing and spoken language skills, and can be the gateway to further qualifications. The skills are linked to GCSE (1-9) in English Language and would allow for a natural progression to a higher level of study.

Pearson Edexcel Functional Skills qualifications demonstrate the ability at an appropriate level to read, write, speak, listen and communicate in English, and to apply these skills effectively to a range of purposes in the workplace and in other real life situations.

The **EDUQAS GCSE** English qualification is made up of two externally-assessed examination components and one internally assessed non-examination component. The internally-assessed non-examination component tests spoken language skills but will not form part of the final mark and grade. There is a slightly heavier weighting on the non-fiction Reading and Writing in Component 2 than on the literature and creative writing in Component 1, in order to ensure that skills for work, life and further education are prioritised.



The **AQA Entry Level** Certificate introduces students to applied mathematics such as money, time, calendars, measurement and basic data handling and statistics. Students complete a portfolio for this course and whilst there are examinations, they are internally administered and marked and can be completed when the students are ready.

Pearson Awards in Number and Measure (Level 1 and Level 2) enable students to develop a thorough knowledge and understanding of concepts in number and measure, and a strong foundation in mathematical techniques. Level 1 is a stepping stone to Functional skills level 1 and lays good foundations for GCSE. Level 2 leads into Functional Skills Level 2 and build on the skills needed for GCSE.

Pearson Edexcel Functional Skills (Level 1 and 2) teaches mathematics in every day contexts. We use Functional Skills as a stepping stone towards, or perhaps as an alternative to, the GCSE qualification and can be completed on-screen or on paper.

The **Pearson Edexcel IGCSE Mathematics** is recognised globally and provides learners with the same progression routes as GCSE. The IGCSE has two papers, each is 2 hours long and both papers are calculator papers. to give them the skills and resilience they need to gain a grade 4 or above.



MATHS @ HIGH CLOSE

Mathematics is a core subject and is delivered regularly throughout the timetable at High Close. We encourage

students to understand the importance of maths in every day life as well as teaching the National Curriculum, which offers students the opportunity to experience many areas of mathematics. The topics are tailored to individual needs and work is differentiated to help support students, stretch their understanding and challenge their knowledge.

Entry Level, Edexcel Award in Maths, and Functional Skills focus mainly on 'real life maths' which young people will encounter in everyday life. IGCSE, whilst also focusing on 'real life maths' and consolidating previous learning, also introduces abstract aspects such as algebra and geometrical problems.

KS4 CURRICULUM

Our aim is for every student to leave Key Stage 4 with a maths qualification. Students will work on the qualification that is most appropriate for them and all will have the option to move through the pathway at a speed that suits them and allow them to move on to the next stages of their education.

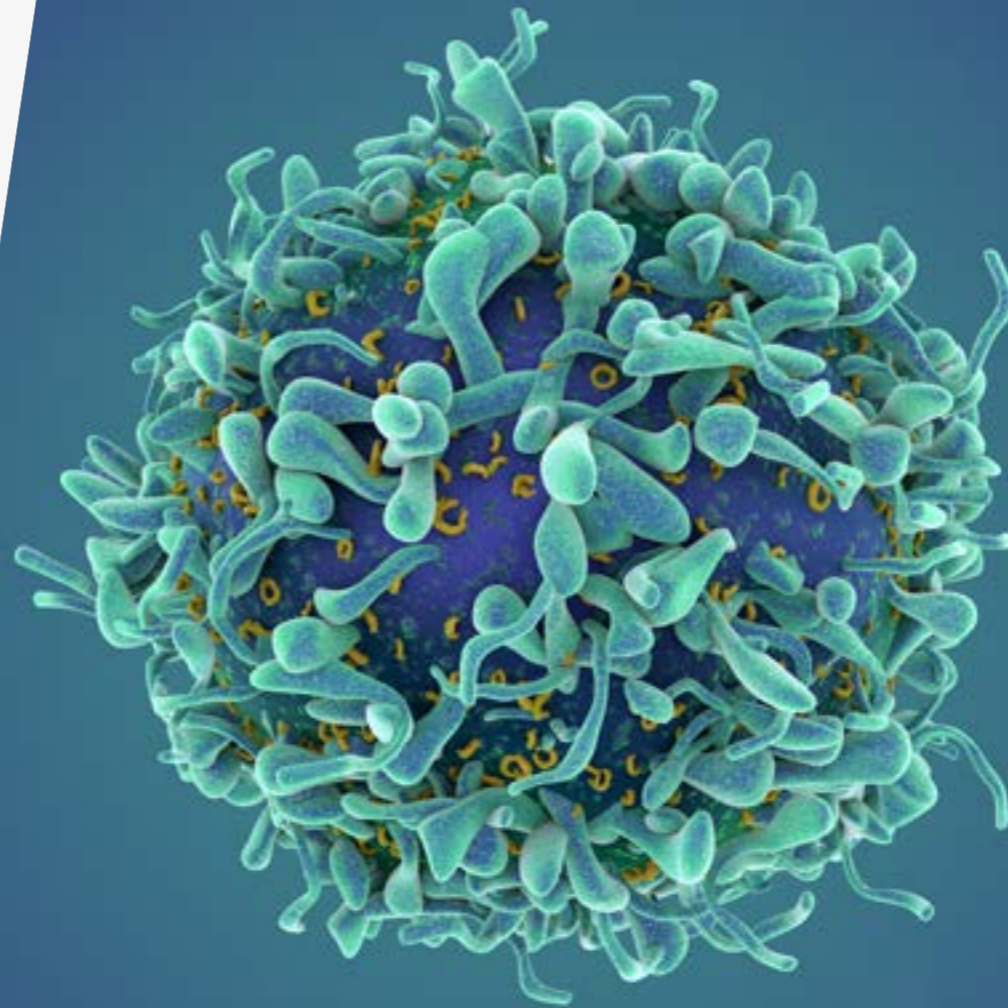
SCIENCE @ HIGH CLOSE

The aim of the Science department is to instil a natural curiosity and lifelong enjoyment of science through engaging lesson ideas and practical experiences. All students will study a range of topics from biology, chemistry and physics in line with the National Curriculum.

The school is situated in large grounds which allows us to carry out ecological surveys and investigations. Where possible trips to see other ecological sites and scientific communities are encouraged to enable young people to see how science works in the world around them. We are also fortunate to have regular visits from a bird-ringing expert as well as ties with a conservation society that helps to encourage an interest in the natural world and ways to help it within our young people.

KS4 CURRICULUM

Our aim is for every student to leave Key Stage 4 with a science qualification. Students will work on the qualification that is most appropriate for them and all will have the option to move through the pathway at a speed that suits them.



Pupils are provided with the opportunity to complete a **BTEC** Level 1/2 qualification following the Edexcel BTEC Principles in Applied Science course. Students work towards a portfolio of tasks covering topics including Human Health and Disease, Life Processes, Chemistry and Our Earth, and Electricity.

A BTEC in Applied Science aims to provide students with the relevant skills and knowledge that employers value, as well as the confidence to progress into a fulfilling, exciting career.

PSHE @ HIGH CLOSE

PSHE lessons are designed to be engaging, interactive and inclusive. However, at the heart of this is the aim to embed the learning in the students' long-term memory. Great emphasis is put on visual resources and a variety of activities: these promote better understanding of concepts so that students leave their secondary education with a rich knowledge of PSHE and a set of social skills that allow them to confidently embrace our wider society.

KS4 CURRICULUM

In PSHE we follow ASDAN's established Personal Development Programmes (Bronze, Silver and Gold) which offers imaginative ways of developing, recording and certificating a wide range of young people's personal qualities, abilities and achievements, as well as introducing them to new activities and challenges. Students achieve the Bronze Award (6 credits) and progress onto the Silver Award (12 credits) and Gold Award (18 credits). Those working towards an ASDAN Short Courses are able to submit up to 3 credits for each of the Personal Development Programmes. All the programmes link to nationally recognised qualifications.



The **Personal Development Programme** features 13 modules. Each learner must work from their own student book and compile a portfolio of evidence to show what they have done.

Students gain 1 or 2 credits for each section completed, with each credit representing about 10 hours of activity. 6 credits are needed to achieve **Bronze**, 12 credits for **Silver** and 18 credits for **Gold**. Internally-moderated Bronze Credit certificates are available for any learner that completes less than 60 hours work.

Students are required to plan and review their work at key points, explaining how they have developed their skills in six areas: Teamwork, Learning, Coping with problems, Use of Maths, Use of English and Use of IT. There are proforma recording documents (Skills Sheets) to guide them.

Entry Level qualifications are designed to give learners the skills to operate confidently, effectively and independently in education, work and everyday life. If they have not obtained the Entry Level Certificate (1-3) by the time they start Key Stage 4, students will have the opportunity to take and pass the qualification then.

Students that have obtained the Entry Level Certificate will then have the opportunity to work towards the **Edexcel Digital Functional Skills** Level 1, which is equivalent to a GCSE grade 2 and above

Students who complete level 1 by January of year 11 will be given the opportunity to work towards the **Microsoft Office Specialist Program** exam, which will give them a professionally recognised qualification.



COMPUTER SCIENCE @ HIGH CLOSE

Computers are everywhere in our society and students learn about the impact they have on our everyday lives. They learn how to make the most of technology through a mixed of engaging lessons and practical activities that include piloting drones, taking computers apart and more.

In Computer Science (CS), learners cover a comprehensive range of topic areas covering the main three strands that are Digital Literacy, ICT and Computing. They develop transferable CS knowledge, understanding and skills by coding, building computers, creating 2D animations, learning about networks and online safety, as well as use a range of software to research and create documents, such as presentations, with the information they find.

KS4 CURRICULUM

Our aim is for every student to leave Key Stage 4 with an ICT qualification. Learners are working towards the Edexcel Digital Functional Skills qualifications. They are designed to equip learners with the confidence and ability to use ICT systems and tools, and find, select, develop, present, and communicate information. They are assessed by a single onscreen assessment.

HUMANITIES @ HIGH CLOSE



Studying Humanities encourages pupils to think about others and to consider more than one side of a question.

It also fosters empathy and understanding of others and a variety of situations and encourages exploring and understanding the human experience, getting an appreciation of the past, while at the same time offering a clearer picture of the future.

The Humanities curriculum extends opportunities to support our pupils to think creatively and critically, to examine the intentions of others and to consider the distribution of resources around the world today as well as informing us about what happened in the past. The work in the department is differentiated, emphasising inclusivity and creating a culture of presenting the material in multiple formats in order to engage every student and stretch the more able.

KS4 CURRICULUM

At Key Stage 4 we offer the opportunity for every pupil to work towards the **ASDAN Beliefs and Values Short Course** certificate which accredits up to 60 hours of activities.



PHYSICAL EDUCATION @ HIGH CLOSE

Physical Education encourages all pupils to follow a healthy and active lifestyle. We provide opportunities to extend learning through various activities as well as develop tactics and strategies to overcome opponents in team and individual sports. Pupils will also have lessons in the gym to focus on individual fitness training.

KS4 CURRICULUM

Alongside the compulsory Physical Education lessons, we also offer the **Entry Level GCSE**. This is awarded through practical assignments and does not require a formal exam. Pupils are required to choose 4 sports whereby they analyse their own performance as part of their assessment.

ART & DESIGN @ HIGH CLOSE



The **ASDAN Expressive Arts Short Course** offers exciting and rewarding activities to develop skills and knowledge through all forms of expressive arts. This programme helps learners develop practical arts skills, as well as personal, social and work-related skills.

Students are introduced to a variety of art-based processes and techniques including printmaking, photography, 3D work and computer-based design. There are also opportunities for pupils to attend external workshops as well as visit museums and galleries.

- Completed Expressive Arts book/e-folio and evidence of challenges completed
- Planning and reviewing documents
- Record of progress
- Summary of achievement, identifying skills development



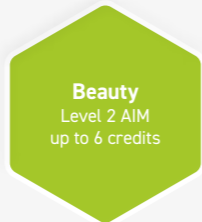
ARTS AWARD @ HIGH CLOSE

The **Arts Award** is a nationally recognised qualification at Bronze (Level 1) and Silver (Level 2) It is suitable for anyone interested in 'The Arts' whether this is music, dance, drama, media, photography or artwork. We will start with the Bronze award which is all about pupils experiencing, trying out and learning more about a range of different art forms.

This year we have been to see 'Oh What a Lovely War' at South Hill Park, visited art exhibitions, taken part in a monologue challenge and had a go at break dancing, as well as many other art-based activities. What we cover depends on the interests of the group so every year is different.

Pupils will have to produce a portfolio of evidence that is marked in school and then someone from the Arts Award will check that they agree with the marking. Portfolios do not have to be written - they could be a video diary, storyboard, comic book or website.

BEAUTY (NAIL ART) @ HIGH CLOSE



This vocational course is a stepping stone for learners considering studying hair and beauty at college and/or for future employment looking at career opportunities available in the sector.

By the end of the course learners will have a comprehensive understanding of nail and art treatment including:

- Consulting with clients
- Carrying out nail and art treatment safely and hygienically
- Understanding the importance of record keeping in relation to nail and art treatments.

Learners will also develop a holistic skill set needed for future customer facing employment such as understanding the principles of customer service, know ways to make a good first impression, and be able to interact positively with customers.



CATERING SKILLS @ HIGH CLOSE

This qualification has been designed to be delivered flexibly to allow learners to develop skills in food hygiene, kitchen, and cooking skills.

Learners who successfully complete the Award qualification will also gain a unit in Understanding Food Hygiene at level 2, thus making them eligible to work cooking and serving food to the public.

In this award learners develop their knowledge of health and safety including food hygiene. They will also look at how to present and serve dishes, and the use of a range of kitchen equipment as well as developing practical skills.

This is a practical subject assessed using a portfolio of evidence showing the array of practical cooking skills the learner developed. The food safety qualification is assessed through a multiple-choice exam set and marked by Aim.



GARDENING @ HIGH CLOSE



The level 2 employability and development skills in horticulture looks to develop learners' knowledge of plants, weeds and vegetables along with competency in caring for plants and weeding in a market garden.

Alongside these learners develop their interpersonal skills including their strengths, time management and strategies for coping with stress providing a well-rounded skill set for future study or employment.

This is a practical course whereby students will be working in the school garden and developing a portfolio of evidence.

These qualifications are assessed through an internally set, internally marked and externally verified portfolio of evidence.



HISTORY @ HIGH CLOSE

The **ASDAN History Short Course** will help young people to develop their history skills. It has been produced in collaboration with the Historical Association, who authored the curriculum, and offers a choice of history-themed activities and challenges.

Students will study key concepts at the core of history (significance, cause and consequence, chronology, diversity, change and continuity, and interpretations) in a range of exciting activities. They will also be given many opportunities to visit historical settings - including castles, galleries and museums .

Learners must present evidence of their activities in an organised portfolio or e-portfolio. This will contain:

- A record of challenges completed, with supporting evidence.
- Recording documents that show planning and reviewing of activities.
- Summary of achievement, highlighting skills development.
- Personal Statement.



SPORTS STUDIES @ HIGH CLOSE

Sports Studies
Level 1 & 2

The AIM Sport and Leisure pathway is a mostly practical course whereby learners will hone their skills in football and/or basketball. There is also the opportunity for our young people to learn more about living healthy active lifestyles, physical fitness and the sport and leisure industry.

Successful completion of this qualification will prepare learners for further study, traineeships, and the world of work. This course is mostly practical with some theory and is assessed through a portfolio of evidence.

These qualifications are assessed through an internally set, internally marked and externally verified portfolio of evidence.

Wood Work
Level 2 AIM
up to 6 credits

WOOD WORK (DT) @ HIGH CLOSE

This qualification has been designed to allow learners who are ready to enter the workplace and give them opportunities to develop essential personal development and employability skills linked to wood work.

In this award learners develop their knowledge of the properties of timbers, and their ability to design and produce a product made of wood.

In addition to this learners will improve their interpersonal skills including time management and strategies for coping with stress and building on their strengths.

This is a practical course which is assessed using a portfolio of evidence demonstrating the array of woodwork skills the learner has developed.